

BINGHAM COUNTY COMMISSIONERS

Whitney Manwaring, Chairman

Eric Jackson

Drew Jensen



Lindsey Gluch, Commission Clerk

501 N. Maple Room 204

Blackfoot, ID 83221

Phone (208) 782-3013

Fax (208) 785-4131

Wednesday, August 20, 2025

8:15 a.m.	Approval of Cash Warrants, Claims and Administrative Documents.	{ACTION ITEM}
8:15 a.m.	Approval & signing of Letter of Support for the Coroners Office to apply For an Idaho Emergency Management Grant.	{ACTION ITEM}
8:30 a.m.	Weekly update meeting with Sheriff Gardner.	
8:30 a.m.	Prior Approval for purchase of Sonar Equipment for Waterways boats.	{ACTION ITEM}
8:30 a.m.	Prior Approval for purchase of 4 Springfield Armory Saint Patrol Rifles.	{ACTION ITEM}
8:30 a.m.	Prior Approval for purchase of 30 Smith & Wesson Pistols.	{ACTION ITEM}
8:30 a.m.	Prior Approval for purchase of 1 Seekins Hit Pro Precision Rifle Platform	{ACTION ITEM}
9:00 a.m.	Weekly update meeting with Dusty Whited- Public Works Director.	
9:00 a.m.	Approval of Resolution 2025-31, Acceptance of Branch Way (155 W), Petal Lane (285 N), Stem Way (165 W), Thorn Lane (275 N) and Hidden Court (170 W), within Rose River Estates Subdivision- Requested by Steve VanOrden.	{ACTION ITEM}
9:00 a.m.	Approval of Partial Satisfaction of Development Agreement for Rose River Estates- Requested by Steve VanOrden.	{ACTION ITEM}
9:00 a.m.	Discussion & decision regarding CTS Opening for Snake River Sanitation on Christmas Eve and New Years Eve.	{ACTION ITEM}
9:00 a.m.	Approval of Resolution 2025-29, Surplus Property for Road & Bridge and Solid Waste departments.	{ACTION ITEM}
9:00 a.m.	Discussion & decision regarding the request to allow Bingham County Utility Coordinating Council to use the Royal Street County property for An evening event parking lot.	{ACTION ITEM}
9:00 a.m.	Decision to remove a mountain road from the state map of county roads or improve it to improved road standard.	{ACTION ITEM}
9:00 a.m.	Prior Approval for Major Purchase of screen & cone for the crusher.	{ACTION ITEM}
10:00 a.m.	Monthly update meeting with Ryan Jolley- Prosecuting Attorney.	
10:30 a.m.	Executive Session pursuant to Idaho Code Section 74-206(1)(a)&(b), to Consider personnel matters.	{ACTION ITEM}
10:30 a.m.	Bi-weekly update meeting with Laraine Pope- Human Resources.	
12:00 p.m.	Chamber Luncheon- Held at Blackfoot Elk's Lodge- Commissioners Attending.	
2:00 p.m.	Bi-weekly update meeting with Tiffany Olsen- Planning & Development Director.	
2:00 p.m.	Discuss how the Board would like to engage Area of City Impact Agreement negotiations- Requested by Tiffany Olsen- Planning & Development Director.	{ACTION ITEM}

"Potato Capital"

- | | | |
|-----------|---|---------------|
| 2:00 p.m. | Review Agricultural Protection Area Commission member applications
And potential appointment of members- requested by Tiffany Olsen-
Planning & Development Director. | {ACTION ITEM} |
| 2:00 p.m. | Review part-time Code Enforcement position job description, rate of pay,
And when to hire- requested by Tiffany Olsen- Planning & Development
Director. | {ACTION ITEM} |
| 2:00 p.m. | Review Planner position and when to hire- requested by Tiffany Olsen-
Planning & Development Director. | {ACTION ITEM} |



Meeting Date: August 20, 2025
Meeting Time: 8:15 am

REQUEST FOR MEETING WITH BINGHAM COUNTY COMMISSIONERS FORM

The Board of County Commissioner's hold meetings various days throughout the week, which are coordinated with the Commission Clerk. Per Idaho Code §74-204(1), the Board cannot hold a meeting without less than 48 hours' notice and posting on the Commission Agenda. Any person(s) needing special accommodations should contact the Lindsey Gluch, Commission Clerk, at (208)785-3013.

Name: Jimmy Roberts

Email: jroberts@binghamid.gov

Phone Number: 208-604-7251

Address: 501 N. Maple St.

1. What is the topic of discussion that you wish the Board to have?

Idaho Emergency Management Grant Program letter of support for project. Stryker Power-Load Stretcher system.

2. Approximately how much time will you need for this agenda item?

15 minutes

3. Will you be requesting that the Board make a decision?

Yes. To sign a letter of support for the proposal for funding.

4. Please cite what authority under either Idaho Code or Bingham County Code the meeting is being requested.

5. Have all supporting documents been included with this form? If not, please note that your meeting may not be scheduled until all necessary documentation has been provided to the Commission Clerk.

Yes. Project proposals, cover letter, sample letter of support

6. Please provide the name and contact information of the individuals that you would like to be invited to the meeting. (Include name, telephone number and email address if known)

Laraine Pope - lpope@binghamid.gov

Please hand deliver or email this completed form, along with all supporting documents to Lindsey Gluch at Lgluch@binghamid.gov, at least 24 hours prior to your scheduled meeting time.

BINGHAM COUNTY COMMISSIONERS

Whitney Manwaring, Chairman

Eric Jackson

Drew Jensen



Lindsey Gluch, Commission Clerk
501 N. Maple Room 204
Blackfoot, ID 83221
Phone (208) 782-3013
Fax (208) 785-4131

August 20, 2025

Idaho EMPG Work Plan Proposal

To whom it may concern:

The Board of Bingham County Commissioners fully supports the submission of the grant application for the Idaho EMPG Work Plan Proposal for the project: Enhancing Decedent Transport and Staff Safety through Power-LOAD System Integration for the Bingham County Coroner's Office.

If the grant is awarded to Bingham County, the funds will be utilized to purchase a Stryker Power-LOAD cot system and compatible Power-PRO cot for the Bingham County Coroner's Office to strengthen the county's emergency response capabilities and staff safety measures during both routine and large-scale fatality incidents.

If there are any questions or concerns, please do not hesitate to contact Lindsey Gluch, Commission Clerk at 208-782-3013.

Sincerely,
BOARD OF BINGHAM COUNTY COMMISSIONERS

Whitney Manwaring, Chairman

Eric Jackson, Commissioner

Drew Jensen, Commissioner

“Potato Capital”



Powered System Proven results



Power-PRO™ XT Cot & Power-LOAD®
Fastening System

Staff satisfaction¹

In a national survey of 250 caregivers from 15 states that use the Stryker Powered System (Power-PRO™ XT & Power-LOAD®):

99% **88%** **85%** **98%**

of those surveyed agree the Stryker Powered System has made their job easier.*

agree the Stryker Powered System has helped them become more efficient.*

agree the Stryker Powered System has improved their on the job satisfaction.*

agree that they are satisfied with the Stryker Powered System.*

Reduction in lost days due to injury²

In a study with York Region Paramedic Services they experienced a **55.9% reduction in lost time days** and a double digit percentage reduction in overexertion/strain injuries after implementation of the Stryker Powered System

Improved patient handling³

In a study with Ada County Paramedics, back injury rates decreased from a peak of 10 in 2010 to **ZERO in 2014 and 2015** after implementation of the Stryker Powered System.

Decrease in perceived exertion⁴

In a third party white paper titled, "Evaluation of Medical Cot Design Considering Biomedical Impact on Emergency Response Personnel" the results suggest:

up to:

35%

Decrease in rating of perceived exertion when using a powered fastener and powered cot when compared to manual equipment.

up to:

62%

Decreased risk of developing a low back disorder when adding powered fasteners and powered cots.

Injury reduction⁵

In a study completed with the Norman Regional Health System, back injury totals **decreased to ZERO** within one year of implementation of Power-PRO™ XT and Power-LOAD® EMSStat experienced a total of 39 injuries in 2010 prior to implementation of the Stryker Powered System.

References

1. Stryker. (2015). Staff Satisfaction Survey [Case Study on Powered System]. Retrieved from: <http://ems.stryker.com>
2. Stryker. (2015). Health & Safety Focused-York Region Paramedic Services [Case Study on Powered System]. Retrieved from: <http://ems.stryker.com>
3. Stryker. (2015). Ada County Paramedics [Case Study on Powered System]. Retrieved from: <http://ems.stryker.com>
4. Data contained in and/or calculated from: T.K. Fredericks, S.E. Butt, K.S. Hamrs, J.D. Burns, (2013). "Evaluation of Medical Cot Design Considering Biomedical Impact on Emergency Response Personnel." International Society for Occupation Ergonomics & Safety.
5. Stryker. (2014). EMSStat, Norman Regional Health System [Case Study on Powered System]. Retrieved from: <http://ems.stryker.com>

*Includes "agree" and "strongly agree" responses



Ada County Paramedics

Stryker's Powered System Brings Injury Reduction and Improved Patient Handling

When Shawn Rayne, Deputy Director for the Ada County Paramedics considered the current status quo, he found a few things to be alarming. The average tenure had decreased to around eight years, and back injuries continued to be a key contributor to that reduction.

"We want people to retire from here without the life-long effects of a back injury, and every time a patient is lifted, there is a small toll taken on the back."

Shawn and the Ada County team began to re-evaluate their current fleet of Ferno 93H and 93P cots and consider different lift assisting options in EMS that would better serve their patients and providers. 2010 through 2013 saw injury rates of 17, 18, 11, and 14 respectively, and Ada County was ready to look at options that could improve these yearly statistics.

Making strides towards injury reduction

In 2014, the research and consideration for new products had come to completion. Ada County began the process of outfitting their rigs with the Stryker EMS Powered System (Power-PRO™ XT cots and Power-LOAD® cot fasteners). The change was strongly influenced by the interest in improving their employee's well-being and finding ways to best serve their large population in Idaho's Treasure Valley. The team considered multiple options, and in the end determined the Stryker Powered System of equipment would be best in serving their demographic of patients both large and small.

Proven innovation that brings tangible results

Ada County decreased their back injuries from a peak of 10 in 2010 to ZERO in 2014 and 2015 with the assistance of the Power-LOAD cot fastening system and Power-PRO XT cot.

Keeping a crew of 105 full-time employees healthy is a tall task and one that the Ada County team focuses on each and every day. The service handles a large volume of calls in the highly populated Treasure Valley area and needs employees that are healthy and engaged to keep up with the high demand for care.

Having 13% of their employees experience on the job injuries in 2013 brought a need for action and one that has had a positive impact on the Ada County team.

"The investment was worth the reward; and the community has been affected in a positive way through the improved patient handling during loading and unloading."

Ada County was initially attracted to the design and function of the Power-PRO XT and Power-LOAD, but has since become increasingly attracted to the injury reduction and cost savings that the products have provided them.

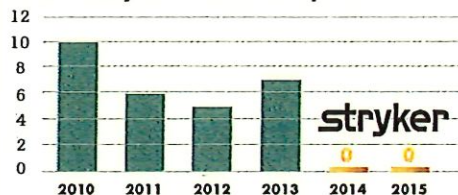
"These Stryker products are now used in our recruitment efforts and advertising for our service. We believe these to be a positive differentiation point for Ada County."

Ada County now sports a full line of Stryker EMS equipment that supports them through all points of the call. Their Stair-PRO chairs assist in the processes involved in going up and down the stairs and extracting patients from facilities, while their powered cots and fasteners dramatically improve the raising and lowering and loading and unloading of patients.

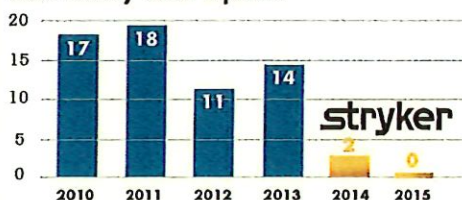


Power-PRO™ XT Cot & Power-LOAD® Fastening System

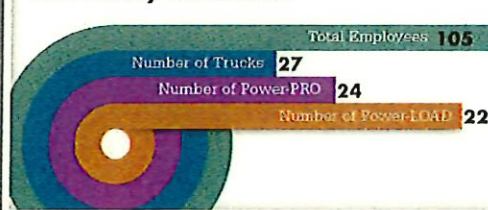
Ada County Back Related Injuries



Ada County Total Injuries



Ada County Paramedics



Percentage of Staff Experiencing Injury



Power and Ergonomics that Provide Benefits

Ada County Paramedics realized many of the primary benefits of the Stryker Power-PRO and Power-LOAD including:

- Substantial reduction in patient handling-related injuries
- Improved safety during loading and unloading processes
- Increased productivity by reducing lost and modified days

Improved dynamic crash safety aligning with changing industry requirements

Improvements for EMS Patients

When considering the effects that the Stryker EMS products have had on patients during transport, a few standout thoughts come to mind. Shawn Rayne shared that "Patients have continuously referenced a more comfortable transport environment on these cots and loading systems."

"We believe that this system eliminates multiple lifts from the equation. That goes a long way in our industry and can work to extend our employees careers significantly."

In an industry with a growing obese population, Power-LOAD provides a safe working load of 870 lbs. A 700 lb. patient). The strength of this equipment allows a decreased need to request backup for large patients and truly makes a difference in handling patients of all sizes.

"In 2015 we've experienced ZERO patient drops, and we attribute that largely to the safety mechanisms put into place on both the Power-PRO and Power-LOAD devices."

The team at Ada County has confidence that their investment in safety and improved equipment is one that provides them a return on investment each and every day.

When Deputy Director, Shawn Rayne was asked if he would recommend other services invest in the Stryker Power-PRO XT and Power-LOAD, his simple response was "Absolutely."

Contact your Stryker EMS Account Manager for more information on this important field research.



Powered System

Power-PRO XT & Power-LOAD

- Clinical Benefits
- Zero Lifting
- Battery Management
- Guided Load/Unload
- Modular System
- Crash Rated
- Powered Bariatric Solution (XPS)

References

1. Power-PRO XT and Power-LOAD implemented in 2014
2. Power-LOAD only
3. NAEMT. "NAEMT. Four in Five Medics Injured on the Job." EMSWorld.com. Perry, Nancy. 19 Nov. 2005. EMS World. 10 Sept. 2012. <<http://www.emsworld.com/article/10323499/naemt-four-in-five-medics-injured-on-the-job>>.
4. Bureau of Labor Statistics, U.S. Department of Labor. "EMTs and Paramedics." Occupational Outlook Handbook, 2012-2013 Edition. 29 March 2012. Web. <<http://www.bls.gov/ooh/healthcare/emts-and-paramedics.htm#tab-3>>.
5. Bureau of Labor Statistics, U.S. Department of Labor. "Firefighters." Occupational Outlook Handbook, 2012-2013 Edition. 11 July 2012. Web. <<http://www.bls.gov/ooh/protective-service/firefighters.htm#tab-3>>.
6. Liberty Mutual Research Institute for Safety. 2011 Liberty Mutual Workplace Safety Index. 2011. <www.libertymutual.com>.



Bingham County Coroner's Office
James "Jimmy" Roberts, AA, D-ABMDI, Coroner
501 N Maple St. #303
Blackfoot, ID 83221
Office 208-782-3040 Fax 208-684-6275

Idaho EMPG Work Plan Proposal

Project Title: Enhancing Decedent Transport and Staff Safety through Power-LOAD System Integration

Agency: Bingham County Coroner's Office

Submitted To: Idaho Office of Emergency Management (IOEM)

Project Summary

This project proposes the acquisition of a Stryker Power-LOAD cot system and compatible Power-PRO cot for the Bingham County Coroner's Office. The goal is to strengthen the county's emergency response capabilities and staff safety measures during both routine and large-scale fatality incidents.

Mission Area(s):

- Response
- Protection
- Mitigation

Core Capabilities Addressed:

- Operational Coordination
 - Responder Safety and Health
 - Mass Fatality Management
 - Continuity of Operations
-

Project Description

The coroner's office plays a vital role in the county's all-hazards emergency response plan, particularly in the event of mass casualty incidents or public health emergencies. This project enhances surge capacity and operational resilience by equipping staff with a powered cot loading system, which automates lifting and reduces strain on personnel.

The following are partners that also engage in lifting operation during a death investigated by the Bingham County Coroner's Office:

Aberdeen Fire and EMS

Bingham County Sheriff's Deputies

Blackfoot Police Department

Blackfoot Fire and EMS

Federal Bureau of Investigation

Fort Hall Police Department

Fort Hall Fire and EMS

Shelley Police Department

Shelley-Firth Fire and EMS

Manual decedent handling is a leading cause of musculoskeletal injuries among coroner personnel. This project will directly reduce injury rates, improve response time, and ensure safe and dignified transport during routine calls and disaster operations alike.

The Power-LOAD system is a powered cot fastener designed to lift and lower the cot into and out of the transport area with the push of a button, reducing strain on personnel and improving the safety and professionalism of every transport. It integrates with the Power-PRO cot through a floor-mounted plate system. Training on both powered and manual operation will be included to ensure continued function in all scenarios.

Importantly, both the Power-LOAD and Power-PRO cot are included in FEMA's Authorized Equipment List (AEL), making them eligible for EMPG funding when tied to core preparedness capabilities such as responder safety, operational continuity, and emergency response.

This investment also supports the Health and Safety Community Lifeline by helping maintain uninterrupted death investigation services. It aligns with national and local THIRA/SPR goals—particularly around surge response and mass fatality logistics.

CDC and OSHA data consistently show that manual decedent handling is a leading cause of musculoskeletal injuries among death care professionals. Integrating powered loading systems helps mitigate these risks, reduce workers' compensation claims, and maintain continuity of operations.

This type of equipment has been successfully funded in other jurisdictions using FEMA EMPG and Homeland Security grants when tied to responder protection, emergency operations, and mass fatality readiness. Referencing this precedent supports the validity and compliance of this proposal.

Objectives

- Reduce staff lifting injuries by 80% in the first year
 - Improve transport efficiency during surge and high-call periods
 - Maintain continuous operations with reduced risk of workforce loss due to injury
-

Expected Outcomes

- Increased readiness and resilience of coroner personnel
 - Improved public safety through quicker, safer response to fatalities
 - Demonstrated alignment with county THIRA and continuity planning
-

Performance Measures

- Pre- and post-implementation tracking of lifting injuries
 - Number of trained staff in system use
 - Reduction in decedent handling time during incidents
 - Response rate during surge periods
-

Budget Justification

Item	Est. Cost	Justification
Stryker Power-PRO Cot (New or Refurbished)	\$16,000– \$24,000	Prevents manual lifting; designed for integration with Power-LOAD
Stryker Power-LOAD System	\$12,000– \$22,000	Powered loading system that lifts and secures the cot with minimal physical effort, reducing staff injury risk and improving efficiency
Power-LOAD Floor Plate Kit	\$600–\$700	Required mounting hardware for system installation
Training on Equipment	\$0 (Included)	Manufacturer-provided with purchase; ensures preparedness and operational use

Total Estimated Cost: \$28,600–\$46,700

Project Lead:

James "Jimmy" Roberts, A.A., D-ABMDI
Coroner
Bingham County Coroner's Office
jroberts@binghamid.gov

208-782-3040 Office
CC. Bingham County Commissioners



Bingham County Coroner's Office
James "Jimmy" Roberts, AA, D-ABMDI, Coroner
501 N Maple St. #303
Blackfoot, ID 83221
Office 208-782-3040 Fax 208-684-6275

Idaho EMPG Work Plan Proposal

Project Title: Enhancing Decedent Transport and Staff Safety through Power-LOAD System Integration

Agency: Bingham County Coroner's Office

Submitted To: Idaho Office of Emergency Management (IOEM)

Project Summary

This project proposes the acquisition of a dedicated transport vehicle equipped with a Stryker Power-LOAD cot system and compatible Power-PRO cot for the Bingham County Coroner's Office. The goal is to strengthen the county's emergency response capabilities and staff safety measures during both routine and large-scale fatality incidents.

Mission Area(s):

- Response
- Protection
- Mitigation

Core Capabilities Addressed:

- Operational Coordination
 - Responder Safety and Health
 - Mass Fatality Management
 - Continuity of Operations
-

Project Description

The coroner's office plays a vital role in the county's all-hazards emergency response plan, particularly in the event of mass casualty incidents or public health emergencies. This project enhances surge capacity and operational resilience by equipping staff with a dedicated vehicle and powered cot loading system, which automates lifting and reduces strain on personnel.

The following are partners that also engage in lifting operation during a death investigated by the Bingham County Coroner's Office:

Aberdeen Fire and EMS

Bingham County Sheriff's Deputies

Blackfoot Police Department

Blackfoot Fire and EMS

Federal Bureau of Investigation

Fort Hall Police Department

Fort Hall Fire and EMS

Shelley Police Department

Shelley-Firth Fire and EMS

Manual decedent handling is a leading cause of musculoskeletal injuries among coroner personnel. This project will directly reduce injury rates, improve response time, and ensure safe and dignified transport during routine calls and disaster operations alike.

The Power-LOAD system is a powered cot fastener designed to lift and lower the cot into and out of the transport area with the push of a button, reducing strain on personnel and improving the safety and professionalism of every transport. Installed in the vehicle, it integrates with the Power-PRO cot through a floor-mounted plate system. Training on both powered and manual operation will be included to ensure continued function in all scenarios.

Importantly, both the Power-LOAD and Power-PRO cot are included in FEMA's Authorized Equipment List (AEL), making them eligible for EMPG funding when tied to core preparedness capabilities such as responder safety, operational continuity, and emergency response.

This investment also supports the Health and Safety Community Lifeline by helping maintain uninterrupted death investigation services. It aligns with national and local THIRA/SPR goals—particularly around surge response and mass fatality logistics.

CDC and OSHA data consistently show that manual decedent handling is a leading cause of musculoskeletal injuries among death care professionals. Integrating powered loading systems helps mitigate these risks, reduce workers' compensation claims, and maintain continuity of operations.

This type of equipment has been successfully funded in other jurisdictions using FEMA EMPG and Homeland Security grants when tied to responder protection, emergency operations, and mass fatality readiness. Referencing this precedent supports the validity and compliance of this proposal.

Objectives

- Reduce staff lifting injuries by 80% in the first year
 - Improve transport efficiency during surge and high-call periods
 - Maintain continuous operations with reduced risk of workforce loss due to injury
-

Expected Outcomes

- Increased readiness and resilience of coroner personnel
 - Improved public safety through quicker, safer response to fatalities
 - Demonstrated alignment with county THIRA and continuity planning
-

Performance Measures

- Pre- and post-implementation tracking of lifting injuries
 - Number of trained staff in system use
 - Reduction in decedent handling time during incidents
 - Response rate during surge periods
-

Budget Justification

Item	Est. Cost	Justification
Dedicated Transport Vehicle	\$40,000– \$60,000	Enables safe, dedicated decedent transport during emergencies and routine use
Stryker Power-PRO Cot (New or Refurbished)	\$16,000– \$24,000	Prevents manual lifting; designed for integration with Power-LOAD
Stryker Power-LOAD System	\$12,000– \$22,000	Powered loading system that lifts and secures the cot with minimal physical effort, reducing staff injury risk and improving efficiency
Power-LOAD Floor Plate Kit	\$600–\$700	Required mounting hardware for system installation

Item	Est. Cost	Justification
Training on Equipment	\$0 (Included)	Manufacturer-provided with purchase; ensures preparedness and operational use

Total Estimated Cost: \$68,600–\$106,700

Project Lead:

James "Jimmy" Roberts, A.A., D-ABMDI
Coroner
Bingham County Coroner's Office
jroberts@binghamid.gov

208-782-3040 Office

CC. Bingham County Commissioners

Trial Delivery Receipt

Date:

Sales Rep Name:

Unit Number:

Count Number:

POWERLOAD	TBD

Comments:

PPRO 2 Trial Unit left with end user Serial Number: 2410003895/POWERLOAD TBD Upon delivery



Thank you for choosing Stryker EMS to meet your ambulance equipment needs. Stryker's Power-PRO ambulance cots come standard with an in-fastener shut off to ensure that the cot cannot be powered in the transport position. Stryker cots are also designed with a safety bar & hook if a powered fastener is not being used. This feature is to prevent the cot from being removed from the vehicle accidentally. If the safety hook is not installed on the floor of the ambulance, the cot may not perform as outlined in our operations manual or in-service video.

I acknowledge, that we have been advised by Stryker that the in-fastener shut off and floor mounted safety hook should be installed prior to using the ambulance cot.

Meeting Date: August 20, 2025
Meeting Time: 8:30 am

Bingham County

Prior Approval For Purchase

(Please provide documentation)

Idaho Code §67-28 PURCHASING BY POLITICAL SUBDIVISIONS

Date: 08/15/2025

Department: Sheriff's Office

Submitted By: Sheriff Gardner / Chief Deputy Nebeker / Sergeant Kent

To be purchased: (3) Garmin Echomap Ultra 2 126 SV Sonars w/GT56UHD Transponders

(3) Garmin Livescope System LVS34 Units

(3) Livescope Pole Mounts

Justification: Update and replacement of the Sonar Equipment on the 3 main Waterways boats utilized in searches. All prices include equipment and professional installation at RV's & Boats for Less in Chubbuck.

Estimated Cost: \$15,921.90

Fund(s) to be paid from: 0038-0899-0000 Capital Outlay → \$11,390.00

0038-0798-0000 Vessel Account → \$4,531.90

☐ Approved

☐ Denied

Approved/Denied By:

Whitney Manwaring, Chairman

Date

Eric Jackson, Commissioner

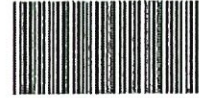
Date

Drew Jensen, Commissioner

Date

RVS & BOATS FOR LESS
170 NEW DAY PARKWAY
CHUBBUCK ID USA 83202
Phone #:(208) 238-5857
Fax #: (208) 235-1940

Estimate Number: 180727



Ticket Date: 7/29/2025
Cashed Out Date:
Parts Employee: (8) Mike Ralphs

PARTS - ESTIMATE

76626 Home: (208) 785-4440 Cell: (208) 251-0449

Bingham County Sheriff
501 N. Maple
Blackfoot ID 83221

Ship To:

Part #	Description	Drop Shipped	Qty	Selling Price	Extended Discount	Extended Price
grm02882-01	Garmin Echomap Ultra 2 126sv w/ GT56UHD	<input type="checkbox"/>	3.00	\$3,453.30	\$0.00	\$10,359.90
322-0100270600	Garmin Livescope system LVS34	<input type="checkbox"/>	3.00	\$1,589.00	\$0.00	\$4,767.00
M	Livescope pole mount	<input type="checkbox"/>	3.00	\$265.00	\$0.00	\$795.00

Pay Type CC # Amount

Signature: _____

Cashed Out By:

Cash Out Date:

Cash Drawer:

Parts Total:	\$15,921.90
Core Total:	\$0.00
Freight Total:	\$0.00
Sublet Total:	\$0.00
Labor Total:	\$0.00
Other Charges:	\$0.00
Shop Supplies:	\$0.00
Sub Total:	\$15,921.90

Discount Total:	\$0.00
Ext Price:	\$15,921.90
Sales Tax:	\$955.34
Total:	\$16,877.21
Deposits:	\$0.00
Amount Due:	\$16,877.21
Amt Tendered:	\$0.00
Chg Returned:	\$0.00

15921.90

PARTS - ESTIMATE

NO RETURNS ON ELECTRICAL ITEMS. NO RETURNS WITHOUT SALES RECEIPT. RESTOCKING CHARGE OF 20% ON NON-STOCK ITEMS!

Printed On : 7/29/2025 3:13:28 PM

Page 1 of 1

28,288.36

Meeting Date: August 20, 2025

Meeting Time: 8:30 am

Bingham County

Prior Approval For Purchase

(Please provide documentation)

Idaho Code §67-28 PURCHASING BY POLITICAL SUBDIVISIONS

Date: 08/15/2025

Department: Sheriff's Office

Submitted By: Sheriff Gardner / Chief Deputy Nebeker

To be purchased: (4) Springfield Armory Saint Patrol Rifles with optics, weapon
lights, and slings.

Justification: New Position weapon issue and spare inventory for Critical Incidents
and/or major equipment failure.

Estimated Cost: \$7,897.92

Fund(s) to be paid from: 05-02-0556-0000 Weapons and Ammunition

☐ Approved

☐ Denied

Approved/Denied By:

Whitney Manwaring, Chairman

Date

Eric Jackson, Commissioner

Date

Drew Jensen, Commissioner

Date



INVOICE DRAFT

Javelin Arms LLC

611 N Broadway St.
Blackfoot, ID 83221
Phone: (208) 403-5150
info@javelinarms.com
https://www.javelinarms.com

Invoice #: Bingham Rifles
Invoice Date: 7/28/2025

**Bingham County
Sheriff's Office**
Attention: Jordyn Nebeker

501 N Maple St
#405
Blackfoot, ID 83221
(208)785-1238
jnebeker@binghamid.gov

Item	Description	Qty	Price	Amount
Springfield Armory Saint Victor SBR, 5.56, Black (STV9115556B)	Serial #'s: TBD	5.00	\$929.00	\$4,645.00
LE - SiCo Saker 556K (SU2256)	Serial #'s: TBD	5.00	\$567.00	\$2,835.00
Vortex Optics Spitfire AR Prism Scope (SPR-200)	When fast target acquisition in tight spaces is mission-critical, the Spitfire™ AR delivers with precision and competitive speed. Designed for close-quarters engagements-with a prism design preferred by shooters with astigmatism-it offers 1x magnification and an etched reticle for rapid, accurate shots...with or without a battery. Compact, lightweight, and built to thrive in high-pressure shooting environments, the Spitfire® AR keeps you focused on your next move without slowing you down.	5.00	\$209.99	\$1,049.95
Magpul MBUS Sight - Front, Black (MAG247-BLK)	The MBUS (Magpul® Back-Up Sight) is a low-cost, color injection-molded, folding back-up sight. The MBUS Front Sight is adjustable for elevation and fits most 1913 Picatinny-railed hand guards, but is specifically tailored to the AR15 / M16 platform. An elevation adjustment tool is included, but most aftermarket A2 front sight adjustment tools may be used as well.	5.00	\$29.00	\$145.00
Magpul MBUS Sight - Rear, Black (MAG248-BLK)	The MBUS (Magpul® Back-Up Sight) is a low-cost, color injection molded, folding back-up sight. The dual aperture MBUS Rear Sight is adjustable for windage and fits most 1913 Picatinny rail equipped weapons, but is specifically tailored to the AR15 / M16 platform.	5.00	\$42.00	\$210.00

Streamlight Protac Rail Mount HP-X PRO Long Gun Light (89015)	Get extreme beam reach with 105,000 candela! The multi-fuel ProTac® Rail Mount HP-X Pro shines far and bright, penetrating smoke, fog, and photonic barriers. Its Jack-Cap® tail cap switch offers operational switch redundancy with both push-button operation or remote pressure switch operation. ProTac Rail Mount HP-X Pro - System - Includes mounting hardware, M-LOK mount, momentary switch and (2) CR123A batteries - Black.	5.00	\$137.49	\$687.45
Magpul MS4 Dual QD Sling Gen 2, Black (MAG518-BLK)	Quickly change from two point or single point configuration.	5.00	\$60.00	\$300.00

4 Units	\$7,897.92
Subtotal:	\$9,872.40
Total Due:	\$9,872.40
Due Date:	7/28/2025

PAY INVOICE NOW

Comments

THIS IS A QUOTE. NOT AN INVOICE.

Meeting Date: August 20, 2025
Meeting Time: 8:30 am

Bingham County
Prior Approval For Purchase
(Please provide documentation)

Idaho Code §67-28 PURCHASING BY POLITICAL SUBDIVISIONS

Date: 08/15/2025

Department: Sheriff's Office

Submitted By: Sheriff Gardner / Chief Deputy Nebeker

To be purchased: (30) Smith & Wesson M&P 2.0 9mm pistols. (28) full-size and (2) sub-compact with optic, weapon light, and holsters.

Justification: Last of FY2025 Phase of pistol replacement plan.

Estimated Cost: \$27,368.43

Fund(s) to be paid from: 05-02-0556-0000 Weapons and Ammunition

☐ Approved

☐ Denied

Approved/Denied By:

Whitney Manwaring, Chairman Date

Eric Jackson, Commissioner Date

Drew Jensen, Commissioner Date



INVOICE DRAFT

Javelin Arms LLC

611 N Broadway St.
Blackfoot, ID 83221
Phone: (208) 403-5150
info@javelinarms.com
https://www.javelinarms.com

Invoice #: Bingham S&W Quote
Invoice Date: 7/28/2025

Bingham County Sheriff's Office

Attention: Jordyn Nebeker

501 N Maple St
#405
Blackfoot, ID 83221
(208)785-1238
jnebeker@binghamid.gov

Item	Description	Qty	Price	Amount
S&W M&P9 M2.0, LE, PF, 509T Direct Mount, OHNS, Serial #'s: TBD FT, NTS, 4.25", BLK (13965)		28.00	\$396.00	\$11,088.00
S&W M&P9 M2.0 Compact, LE, OR, OHNS, FT, NTS, 3.6 (13613)	Serial #'s: TBD	2.00	\$396.00	\$792.00
S&W M&P Magazine, 9mm, 17 Round, Black (194400000)		46.00	\$21.00	\$966.00
Holosun 509T, Red (HE509T-RD X2 LEM)	Holosun 509T, Enclosed Emitter, Red, Multiple Reticle System, Titanium Housing, Shake Awake, Solar Failsafe, Side Load Battery	29.00	\$359.97	\$10,439.13
CNC Pros M&P2.0 to 509T Adapter Plate (SMT-AND- WSS-M)	Adapter plate for the Smith & Wesson M&P 2.0 Optic Ready system to Holosun 509T. Allows for co-witness of factory installed optic height night sights.	1.00	\$50.00	\$50.00
Streamlight TLR-1HL, Black (69260)	White LED technology, impervious to shock with a 50,000 hour lifetime. TIR optic produces a concentrated beam with optimum peripheral illumination. 1,000 lumens; 20,000 candela peak beam intensity; 283m beam distance; runs 1.5 hours.	28.00	\$162.42	\$4,547.76
Streamlight TLR-7A Flex, Black (69424)	The TLR-7® series is going rechargeable! The TLR-7® X multi-fuel rail-mounted light accepts either Streamlight's SL-B9® USB rechargeable protected lithium-ion battery pack or a	1.00	\$140.64	\$140.64

	CR123A lithium battery. Interchangeable rear paddle switches accommodate your shooting style. Multi-Fuel: Uses (1) Streamlight SL-B9® protected Li-Ion USB-C rechargeable battery pack or (1) CR123A lithium battery 500 lumens; 5,000 candela; 140m beam; runs 1.5 hours (CR123A), runs 1 hour (SL-B9) Ambidextrous rear paddle s			
Safariland ALS Duty Holster, Mid-Ride, S&W M&P9 M2.0, Optic, Light, STX Tactical, RH (6390RDS-2222-131)	The 6390RDS holster is specifically designed for firearms with red dot sights mounted to them. This open-top holster features the Automatic Locking System (ALS®), an internal locking device that retains the weapon in all directions with no straps or snaps to manipulate. Once the weapon is holstered, it locks into place. The holster is completely operable with the thumb and once the ALS® is deactivated a simple straight-up draw is used. Features a mid-ride belt loop.	30.00	\$144.83	\$4,344.90
Duty Handgun Trade-in Credit	Glock 17 Gen 4. Includes 3 magazines and factory box, if available. Serial #'s: TBD	20.00	(\$250.00)	(\$5,000.00)

Subtotal: \$27,368.43

Total Due: \$27,368.43

Due Date: 7/28/2025

PAY INVOICE NOW

Comments

THIS IS A QUOTE. NOT AN INVOICE.

Meeting Date: August 20, 2025
Meeting Time: 8:30 am

Bingham County

Prior Approval For Purchase

(Please provide documentation)

Idaho Code §67-28 PURCHASING BY POLITICAL SUBDIVISIONS

Date: 08/15/2025

Department: Sheriff's Office

Submitted By: Sheriff Gardner / Chief Deputy Nebeker

To be purchased: (1) Seekins Hit Pro Precision Rifle Platform equipped with Vortex Strike Eagle 5-25x56mm Optic Silencer Co Suppressor, Bipod, and Polymer Magazine Setup. Lifetime Warrantee and Officer Incident Exchange Program included.

Justification: Weapon to issue to the 2nd designated Bingham County Sniper on the SEI STAR Team.

Estimated Cost: \$4,200.00

Fund(s) to be paid from: 05-02-0556-0000 Weapons and Ammunition

☐ Approved

☐ Denied

Approved/Denied By:

Whitney Manwaring, Chairman Date

Eric Jackson, Commissioner Date

Drew Jensen, Commissioner Date



INVOICE DRAFT

Javelin Arms LLC

611 N Broadway St.
Blackfoot, ID 83221
Phone: (208) 403-5150
info@javelinarms.com
https://www.javelinarms.com

Invoice #: Bingham Sniper Rifle Quote
Invoice Date: 8/15/2025

Bingham County Sheriff's Office

Attention: Jordyn Nebeker

501 N Maple St
#405
Blackfoot, ID 83221
(208)785-1238
jnebeker@binghamid.gov

Item	Description	Qty	Price	Amount
Seekins Havak HIT PRO M3 Rifle, 308 Win, Serial #: 18", Black (0011710195-F)		1.00	\$2,136.00	\$2,136.00
Vortex Optics Strike Eagle 5-25X56 FFP EBR-7C MOA (SE-52503)		1.00	\$689.99	\$689.99
Vortex Optics Precision Matched Rings, 34mm, 1" height (PMR-34-100)		1.00	\$155.99	\$155.99
Vortex Optics Lo Pro Bubblelevel, 34mm (LBL-34)		1.00	\$47.99	\$47.99
Butler Creek Flip Open Objective Lens Cover, Size 51 (30510)		1.00	\$8.00	\$8.00
Butler Creek Flip Open Eyepiece Lens Cover, Size 20 (M020200)		1.00	\$8.00	\$8.00
SilencerCo Omega 300 Suppressor, Serial #: Body Only, Black (SU4758)		1.00	\$412.30	\$412.30
SilencerCo Bravo Front Cap, 30 cal, Black (AC1340)		1.00	\$65.80	\$65.80

SilencerCo Bravo ASR Mount (AC824)		1.00	\$113.40	\$113.40
SilencerCo ASR Muzzle Brake, 30 cal, 5/8"x24 (AC591)		1.00	\$65.80	\$65.80
Armageddon Gear Suppressor Cover	Standard High Temp, Black, SilencerCo Omega 300 with ASR Mount. (AG0265)	1.00	\$80.00	\$80.00
Harris Engineering S-BRM Bipod	Swivel, Notched Legs, 6" - 9"	1.00	\$110.00	\$110.00
American Defense Harris Swivel Bipod Mount, ARCA, Black (AD-ARCA- BP-P2-STD)	The AD-ARCA-BP-P2 Bipod Mount is designed to adapt to the ARCA-Swiss rail platform and enables you to attach a Harris-S Swivel bipod to your ARCA railed forearm.	1.00	\$125.00	\$125.00
KMW Pod-Loc	Harris bipod swivel feature can be locked and unlocked with only your thumb and finger within seconds without breaking your firing position.	1.00	\$25.00	\$25.00
Amend2 Short Action AICS Magazine, Mod 3, 7.62x51/308, 5 Rounds, Black (SAAICSBK5)		1.00	\$25.00	\$25.00
TriggerTech Remington 700 Trigger, Special, Two-Stage, No Bolt Release, Flat, Black (R70-TCB- 13-TNF)	Javelin Arms is going to swap out the trigger that comes in the Seekins Rifle from the factory for a more duty appropriate option at no cost to the County. This option is two-stage and is not as light of a pull weight.	1.00	\$0.00	\$0.00

Subtotal: \$4,068.27

Total Due: \$4,068.27

Due Date: 8/15/2025

PAY INVOICE NOW

Comments

THIS IS A QUOTE. NOT AN INVOICE



Meeting Date: August 20, 2025
Meeting Time: 9:00 am

REQUEST FOR MEETING WITH BINGHAM COUNTY COMMISSIONERS FORM

The Board of County Commissioner's hold meetings various days throughout the week, which are coordinated with the Commission Clerk. Per Idaho Code §74-204(1), the Board cannot hold a meeting without less than 48 hours' notice and posting on the Commission Agenda. Any person(s) needing special accommodations should contact the Lindsey Gluch, Commission Clerk, at (208)785-3013.

Name: **Steve VanOrden**

Email: VanOrden5150@gmail.com

Phone Number: **1-208-317-4450**

Address: **891 W. 100 N., Blackfoot**

1. What is the topic of discussion that you wish the Board to have?

1) Request to accept Roads within Rose River Estates Subdivision (Branch Way (155 W), Petal Lane (285 N), Stem Way (165 W), Hidden Court (170 W) and Thorn Lane (275 N))

2) Approval of Partial Satisfaction of Development Agreement for Rose River Estates Subdivision.

2. Approximately how much time will you need for this agenda item?

15 minutes

3. Will you be requesting that the Board make a decision?

Yes

4. Please cite what authority under either Idaho Code or Bingham County Code the meeting is being requested.

5. Have all supporting documents been included with this form? If not, please note that your meeting may not be scheduled until all necessary documentation has been provided to the Commission Clerk.

Documents will be provided by county staff.

6. Please provide the name and contact information of the individuals that you would like to be invited to the meeting. (Include name, telephone number and email address if known)

Dusty Whited and Tiffany Olsen

Please hand deliver or email this completed form, along with all supporting documents to Lindsey Gluch at Lgluch@binghamid.gov, at least 24 hours prior to your scheduled meeting time.

**BINGHAM COUNTY
RESOLUTION NO. 2025-31**

A RESOLUTION AUTHORIZING ACCEPTANCE OF BRANCH WAY (155 W), PETAL LANE (285 N), STEM WAY (165 W), HIDDEN COURT (170 W) AND THORN LANE (275 N), IN BINGHAM COUNTY, IDAHO

WHEREAS, The Bingham County Commissioners have the authority to accept and confirm the dedication of a road right-of-way to be open for public travel, (Idaho Code § 50-1313);

WHEREAS, The Record of Survey for the Rose River Subdivision, was recorded in the Bingham County Clerk's Office as Instrument Number 755919 and is attached as "Exhibit A", along an Affidavit of Correction to be attached to the Plat of Rose River Estates, recorded as Instrument Number 755978 and is attached as "Exhibit B"; and

WHEREAS, The Bingham County Public Works Director has acknowledged that Bingham County Road Standards have been met and recommends that Branch Way (155 W), Petal Lane (285 N), Stem Way (165 W), Hidden Court (170 W) and Thorn Lane (275 N) be accepted; and

THEREFORE, BE IT HEREBY RESOLVED, at a Public Meeting held on August 20, 2025, the Board of County Commissioners of Bingham County, Idaho, in the interest of the public, accepted Branch Way (155 W), Petal Lane (285 N), Stem Way (165 W), Hidden Court (170 W) and Thorn Lane (275 N).

SIGNED this 20th day of August 2025.

BINGHAM COUNTY COMMISSION

ATTEST:

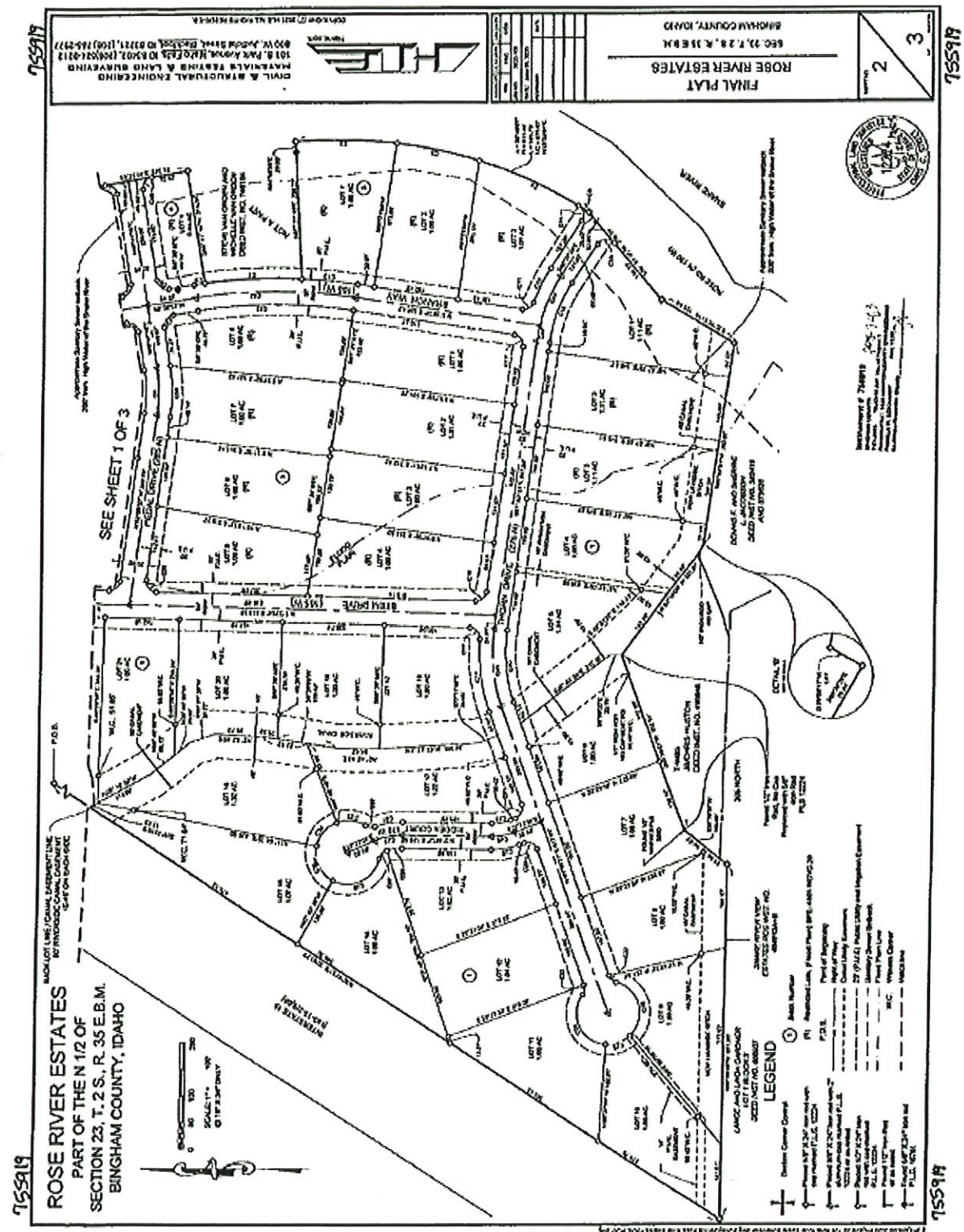
Whitney Manwaring, Chairman

Eric Jackson, Commissioner

Pamela W. Eckhardt
Bingham County Clerk

Drew Jensen, Commissioner





755919

"EXHIBIT B"

AFFIDAVIT of Correction

**TO BE ATTACHED TO THE PLAT OF ROSE RIVER ESTATES OF BINGHAM
COUNTY**

RECORDED JULY 21, 2023, AS INSTRUMENT NO. 755919.

State of Idaho)
 :
County of Bingham)

Instrument # 755978

BINGHAM COUNTY

7-24-2023 04:38:21 PM No. of Pages: 1

Recorded for : 1429 HARPER LEAVITT ENGINEER

PAMELA W. ECKHARDT

Fee: 10.00

Ex-Officio Recorder Deputy

I, Chris G. Street of HLE Engineering & Surveying, Inc., being first duly sworn, deposes
and says:

1. That I am a Registered Land Surveyor in the State of Idaho.
2. That I prepared the Subdivision Plat of Rose River Estates, Bingham
County, Idaho recorded as Instrument No. 755919, dated July 21, 2023.
3. I had inadvertently labeled the new County Road located at 285 N as
"Pedal" Drive and it should have been labeled "Petal" Dr.

Chris G. Street, PLS # 12224

Dated: 7/24/2023

NATALIE GRACE BUCKLEIN
Notary Public - State of Idaho
Commission Number 20224581
My Commission Expires Sep 22, 2028

Natalie Grace Bucklein

Notary Public for Idaho

Residing at: Bingham County ID

Commission Expires: 9/22/2028

Dated: 7/24/2023

Bingham County Utility Coordinating Council
Part of the Idaho Utility Coordinating Council



Bingham County Dirt Dayz

Join local contractors and a variety of vendors in Bingham County's 1st Annual Dirt Dayz. With real heavy equipment, displays, a huge sand pile, vendors, hot dogs, hot chocolate and trick-or-treating, you are sure to have a blast! Our focus is education on safety with underground utilities but our goal is to make it fun!

October 25th, 2025 - 12 to 5 p.m.

Eastern Idaho Fair Grounds
97 Park St. Blackfoot, ID 83221

Admission is FREE

Hot Dogs for \$1



Bingham County Utility
Coordinating Council

Gwen Inskeep, Secretary/Treasurer
Phone: 208-782-3172
Email: ginskeep@blnghamid.gov



**BINGHAM COUNTY
RESOLUTION NO. 2025-29**

A FORMAL RESOLUTION DECLARING CERTAIN BINGHAM COUNTY PROPERTY
NOT NECESSARY FOR USE IN BINGHAM COUNTY, IDAHO

WHEREAS, The Bingham County Commissioners have the authority to manage county property, (Idaho Code §31-807);

WHEREAS, The Bingham County Commissioners have the authority to sell or offer for sale personal property not exceeding two hundred fifty dollars (\$250) in value at private sale, (Idaho Code §31-808);

THEREFORE, BE IT HEREBY RESOLVED, by the Board of County Commissioners, Bingham County, Idaho, that the following items may be sold as excess property:

BINGHAM COUNTY SOLID WASTE

2009 Dodge	R1500	VIN: 1D7HU18258J143511
2014 Loader	CAT	VIN: CATIT14GCERP00457
2017 Live Floor Trailer	IMCO	VIN: 1M9W533B2H1041047

BINGHAM COUNTY ROAD & BRIDGE

2010 Dodge	R1500	VIN: 1D7RV1GT8AS142557
2010 Grader	CAT	VIN: CAT0160MEB9T00164

DATED this ____ day of August 2025.

BINGHAM COUNTY COMMISSION

Whitney Manwaring, Chairman

ATTEST:

Eric Jackson, Commissioner

Pamela W. Eckhardt
Bingham County Clerk

Drew Jensen, Commissioner

Troy Lenhart: Road & Bridge Supervisor
Bingham County Road & Bridge
245 N 690 W
Blackfoot, ID

August 13, 2025

LRI Program – 2025 Results – Notification of Deficiency

The Idaho Transportation Department (ITD) has finished Summer Field Checks of randomly selected IMPROVED roads in your area as part of the Local Road Inventory (LRI) Program.

Deficient Road(s)

One or more road(s) do not meet the standard of IMPROVED road as defined by Idaho code. Deficient sections are highlighted in red in the map(s) provided. Reasons for downgrade are described here, as well as images demonstrating common issues with drainage and grading.

Map #1 0.32 -miles, Trail Creek Rd., UNIMPROVED because *CONCAVE areas, possibly including rutting or erosion, are preventing adequate drainage.*

What Are Your Options?

Contact Us (Keep SHDA Funding)	Do Nothing (Lose SHDA Funding)
<p>To maintain your funds for these miles, please contact us to either:</p> <ul style="list-style-type: none">• Ask questions or provide clarification.• Tell us that you plan to repair the road. <p>If you do this and report the mile(s) as improved in the end-of-year report, you will not lose funds. We will re-check the road(s) next year to confirm IMPROVED status.</p>	<p>If you do nothing and do not contact us:</p> <ul style="list-style-type: none">• These 0.32 miles will stay UNIMPROVED.• These miles will be subtracted from your total IMPROVED road mileage.• We will not attempt further follow-up.• You will not get funds for these miles.

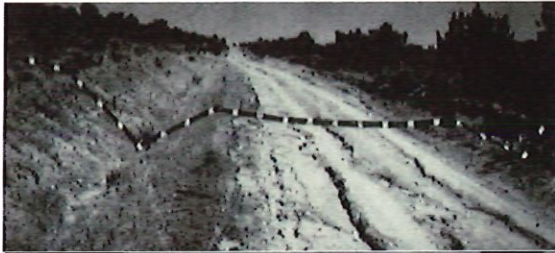
What is the LRI Program?

Every year, you report your IMPROVED mileage, and the ITD Director certifies this, so that funds can be distributed from the State Highway Distribution Account. This process is called the LRI Program. If you have any questions, please feel free to contact us here in the LRI Program Team.

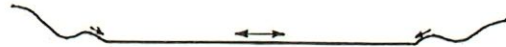
Greg Wallingford, GIS Analyst
Greg.Wallingford@itd.idaho.gov
(208)-334-8613

CC: lhtac@lhtac.org, Wendy.Bates@itd.idaho.gov, Monica.Crider@itd.idaho.gov

Examples of Common Issues with Drainage and Grading



Concave surface prevents proper drainage. Limited corrective measures could change classification to acceptable.



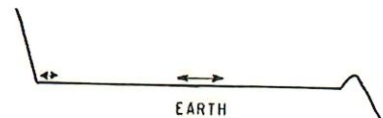
Inadequate maintenance has allowed drainage features to disappear. Side ditches, culverts and crowning are needed.



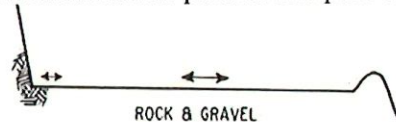
Repeated flat-blade maintenance has created a virtual canal.



Flat sections in good gravel must be crowned for adequate drainage to the outside.

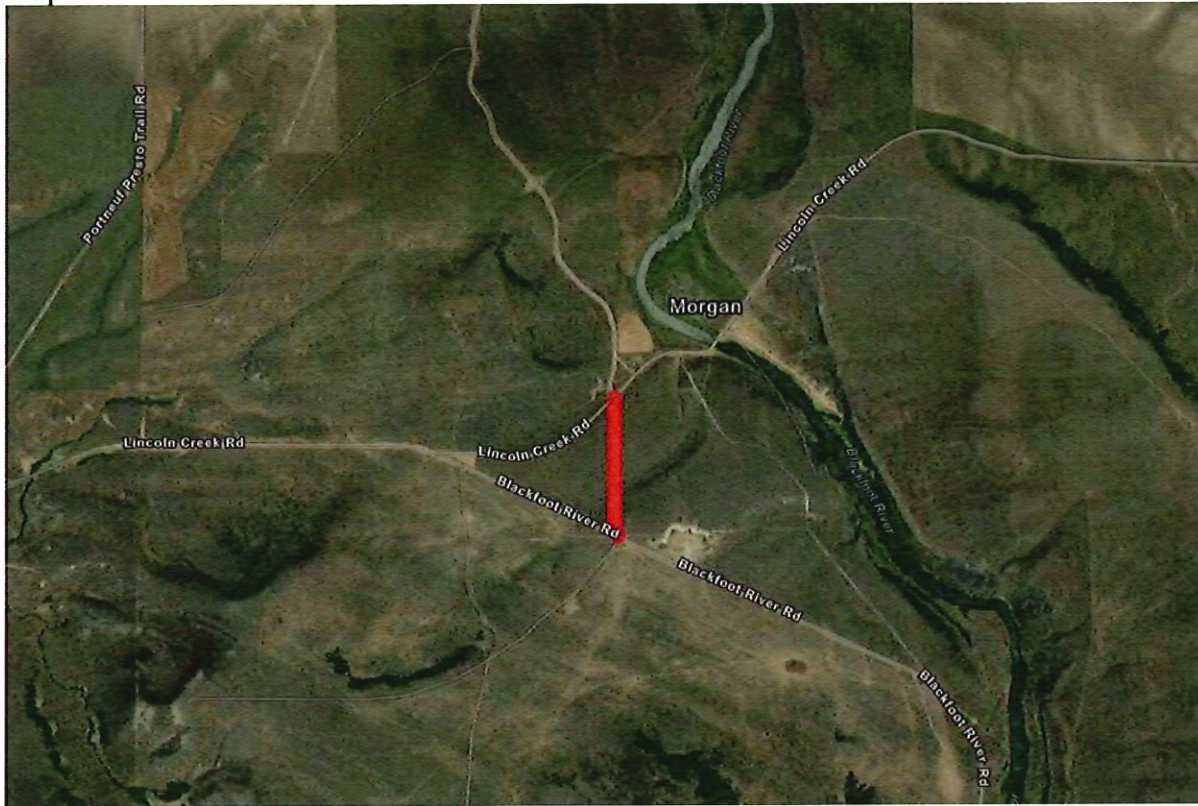


Hillside section in earth must have proper slope and ditch at the toe of the hill, or a normal crown when erosion is controlled to provide adequate drainage.



Hillside section in rock & gravel must have a proper slope either to the toe of the hill or to the outside, or, have a normal crown. If the slope is to the toe of the hill, ditching is necessary unless material is essentially solid rock. If the slope is to the outside, or a normal crown is used, ditching is required and erosion on the outside must be controlled.

Map #1





The Bingham/Caribou County border is shown at the bottom as a black dashed line.





END OF DOCUMENT

**PRIOR APPROVAL
FOR
MAJOR PURCHASES**

Approval Only
(do not process as a claim)

Date: 8/14/2025

Submitted By: Troy Lenhart

Return To: Dusty Whited

Purchase: cone and liner

Justification:

Cost / Estimated Cost: \$18,511.18

Fund: 02 Dept: 46 Acct: 491 01

☐ APPROVED

☐ DENIED

Comments:

Approved / Denied By:	<u>Whitney Manwaring - Chairman</u>	<u> </u> Date
	<u>Eric Jackson - Commissioner</u>	<u> </u> Date
	<u>Drew Jensen - Commissioner</u>	<u> </u> Date

**Parts Quote**

Date 8/1/2025
Quote # QU49709

Bill To
Bingham County Road & Bridge
245 North 690 West
Blackfoot ID 83221
United States

Ship To
Bingham County Road & Bridge
245 North 690 West
Blackfoot ID 83221
United States

PO # Pending Expires 8/31/2025 Exp. Close 8/1/2025 Project Sales Rep Milton Bullock Sales Rep 2 Jeff Averett Shipping Method GF - Truck

Quantity	UOM	Item	Description	Rate	Amount	Memo
1	EA	125617 4563985X-21 Fine Liner K300+ 21%	4563985X-21 Fine Liner K300+ 21%	\$3,333.74	\$3,333.74	Stock Lindon, UT
1	EA	105099 4563225X-21 Fine Mantle w/ Dust Skirt K300/K300+ 21% (rt1065)	4563225X-21 Fine Mantle w/ Dust Skirt K300/K300+ 21%	\$3,169.91	\$3,169.91	Lead Time 2 Days
1	EA	105083 456191 K-300 Torch Ring	K-300 Torch Ring	\$615.82	\$615.82	Stock Lindon, UT
1	EA	104970 450053	450053 MANTLE NUT CAP, 45 INCH	\$115.96	\$115.96	Stock Lindon, UT
1	EA	104356 070105 Mantle Cap Screw	Mantle Cap Screw SOC 1-1/4 UNC X2-1/2"	\$21.23	\$21.23	Stock Lindon, UT
4	EA	105121 456453 K-300 Foam under liner ret ring (Requires 4pcs)	456453 K-300 Foam under liner ret ring (Requires 4pcs)	\$17.96	\$71.84	Stock Lindon, UT
3	EA	105122 456454 K-300 Foam Liner Ret (Requires 3pcs)	456454 K-300 Foam Liner Ret (Requires 3pcs)	\$27.93	\$83.79	Stock Lindon, UT
1	EA	105256 540103	540103 Foam 1X2X44	\$3.34	\$3.34	Stock Lindon, UT
1	EA	104819 090037B	090037B FLOWBAC Backing Material	\$86.60	\$86.60	Stock Lindon, UT
5	EA	PLACEHOLDER - SALES QUOTE ONLY	74-1/2" OH x 48" x 5/8" Diamond Z-Screen (5 Bar)	\$620.85	\$3,104.25	Stock Lindon, UT



Please send remittance to: PO Box 1020 Pleasant Grove, UT 84062
801.796.6125 | goodfellowcorp.com

1 of 2

11,008.95

**Parts Quote**

Date 8/1/2025
Quote # QU49709

Quantity	UOM	Item	Description	Rate	Amount	Memo
5	EA	PLACEHOLDER - SALES QUOTE ONLY	74-1/2" OH x 48" x 3/8" Diamond Z-Screen (5 Bar)	\$753.65	\$3,768.25	Stock Lindon, UT
5	EA	PLACEHOLDER - SALES QUOTE ONLY	74-1/2" OH x 48" x 3/16" Diamond Z-Screen (7 Bar)	\$827.29	\$4,136.45	Stock Lindon, UT

Subtotal \$18,511.18
Tax Total \$0.00
Total \$18,511.18

Notes to Customer:



Meeting Date: August 20, 2025
Meeting Time: 3:00 pm

REQUEST FOR MEETING WITH BINGHAM COUNTY COMMISSIONERS FORM

The Board of County Commissioner's hold meetings various days throughout the week, which are coordinated with the Commission Clerk. Per Idaho Code §74-204(1), the Board cannot hold a meeting without less than 48 hours' notice and posting on the Commission Agenda. Any person(s) needing special accommodations should contact the Lindsey Dalley, Commission Clerk, at (208)785-3013.

Name: Tiffany Olsen

Email: tolsen@binghamid.gov

Phone Number: 208-782-3177

Address: 490 N Maple Street, Suite A

1. What is the topic of discussion that you wish the Board to have?

Discuss how the Board would like to engage Area of City Impact Agreement negotiations (action item)

Review Agricultural Protection Area Commission member applications and potential appointment of members (action item)

Review part-time Code Enforcement Position job description, rate of pay, and when to hire (action item)

Review Planner position and when to hire (action item)

2. Approximately how much time will you need for this agenda item? 45 min.

3. Will you be requesting that the Board make a decision? Yes

4. Have all supporting documents been included with this form? If not, please note that your meeting may not be scheduled until all necessary documentation has been provided to the Commission Clerk.

No, but will be prior to meeting

5. Please provide the name and contact information of the individuals that you would like to be invited to the meeting. (Include name, telephone number and email address if known)

Addie Jo Jackman

Paul Rogers

Laraine Pope